

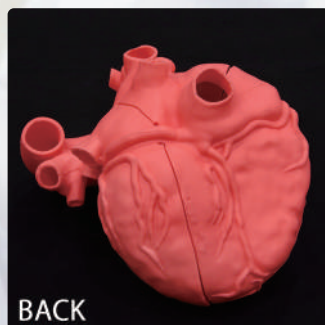
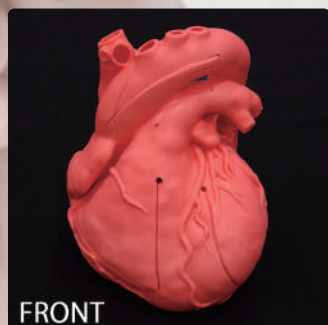
# Cardio Simulator

## Cardio Model E.V.

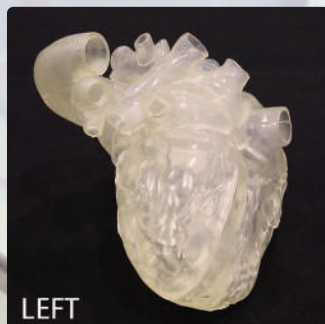
~ Save the Hearts ~

Highly accurate 3D data is created using CT DICOM data.  
A high degree of reproducibility to support the needs of the medical field.  
The internal structure of the heart is realistically reproduced,  
with Made in Japan quality.

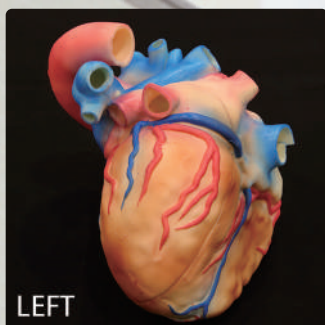
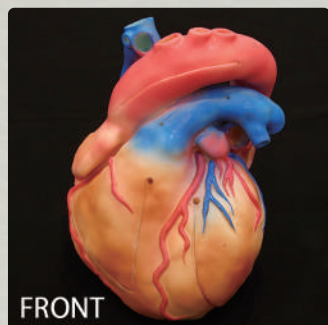
XC-03T (Red)



XC-04T (Clear)

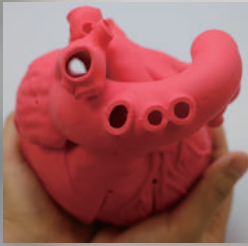


XC-05T (Color)

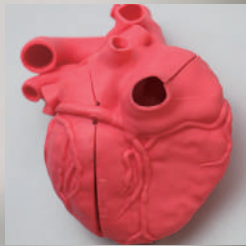


The optimal model for education, research, and pre-operation training. Born from the need by physicians who experienced real-life problems for a soft, precise 3D training model.

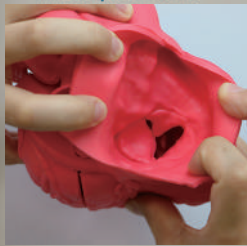
1. Superior Vena Cava



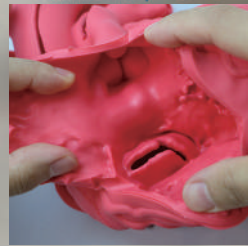
2. Inferior Vena Cava



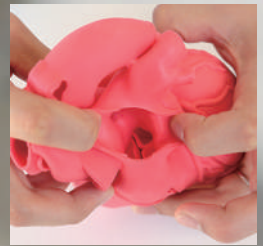
3. Fossa ovalis and Tricuspid Valve



4. Tricuspid Valve and Pulmonary Valve



5. Pulmonary Valve



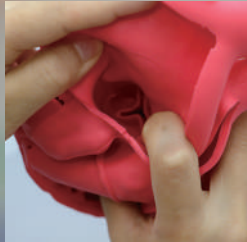
6. Bicuspid Valve and Internal left auricle



7. Bicuspid Valve and Aortic Valve



8. Aortic Valve



9. Right Ventricle's Papillary



10. Left Ventricle's Papillary



## Overview

The optimal model for education, research, and pre-operation training. Born from the need by physicians who experienced real-life problems for a soft, precise 3D training model.

## Principle

Highly accurate 3D data is created using CT data. Stereolithography and silicone resin are used to create a master mold. An organ model using ultra soft resin is manufactured through a vacuum casting method.

**Product Type** : Standard Model Size: W 130 mm × H 150 mm × D 130 mm

**Material** : Urethane

**Component** : External Structure of Heart;

Right Atrium, Right Ventricle, Left Atrium, Left Ventricle, Aorta (Arch of the Aorta), Superior Vena Cava, Inferior Vena Cava, Pulmonary Artery (right and left), Pulmonary Vein (right superior, right inferior, left superior, left inferior), External Left Auricle, Coronary Sinus Vein (Surface only, not lumen)

Internal Structure of Heart;

Right Atrium (Fossa ovalis, Tricuspid Valve), Right Ventricle (Tricuspid Valve, Pulmonary Valve, Papillary muscle), Left Atrium (Bicuspid Valve, Internal left auricle), Left Ventricle (Aortic Valve, Bicuspid Valve, Papillary muscle)

## General Disclaimer

Please be aware that small imperfections in individual units may be present due to their handmade nature.  
 -Color and hardness may differ slightly between individual units.  
 -Fragment created during the production process may be found in the heart cavity but do not affect product performance.  
 -Some units may have lines or adhesion marks unrelated to the heart's structure.

Four D E.M. Co.,Ltd. / Hospital Service Co.,Ltd. do not take any responsibility for damage or injury incurred as a result of user negligence.

## Handling

-Due to the product's adhesive nature, coating may transfer or cohere when contacted is made.  
 Also, please be advised that plasticizer may seep from the product.  
 -Pulling on this product with excessive force may cause it to rip or tear.  
 -Please be advised that heat, UV rays etc. may cause the unit melt or discolor.  
 -Store the unit in its original box, away from sunlight, excessive heat and humidity.  
 -The XC-04T (Clear) may whiten or become cloudy if submerged in water for 3 hours or more.  
 In the event that whitening should occur in the clear model, please completely dry it before further use.  
 -Although this product attempts to faithfully reproduce the human heart, it is not designed to be a substitute for actual diagnosis and does not guarantee the success of any procedure.  
 -Please be aware that product specifications may be changed without notice due to improvements.

(Manufacturer)



Hospital Service Co.,Ltd.

2F SMG Bldg, 2, Kamitoba, Kitatohnomoto-cho, Minami-ku, Kyoto, 601-8122 JAPAN

TEL : 81-75-671-2361 FAX : 81-75-671-2309

Email : hpservice@hps-mds.jp

URL : <http://www.hps-mds.jp/>

(Distributor)



Four D E.M. Co., Ltd.

Four D E.M. Co.,Ltd.

219/19 Krungthep-non Soi.6, Krungthep-non Road, Nonthaburi, Thailand 11000

TEL : +66 2-965-0523 ext. 32 FAX : +66 2-965-05

Email : fourd01@yahoo.com

Website : <http://www.fourd-simulator.com/>

We can customize and create original models to suit your needs.

Please contact us for details.