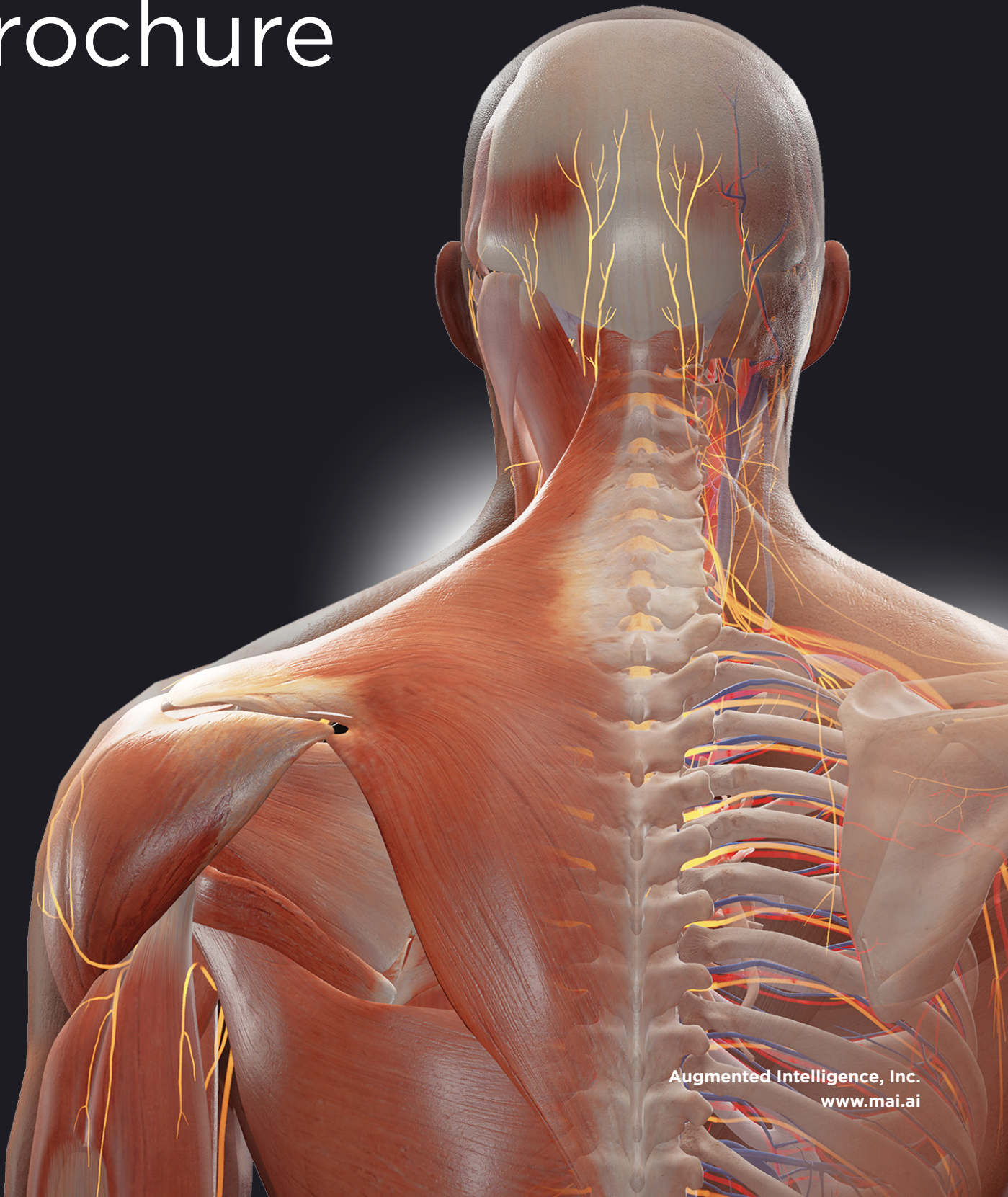


BodyMap Brochure



Augmented Intelligence, Inc.
www.mai.ai

BodyMap Brochure

| | |
|-----------------------------|----|
| Our Vision | 4 |
| Introduction | 6 |
| Features | 7 |
| • Comprehensive Anatomy | |
| • High Fidelity Model | |
| • Intuitive UI | |
| • Easy Manipulation | |
| • Interactive Flashcard | |
| • Powerful Tools | |
| • Virtual Space | |
| • Learning Platform | |
| Scenario | 14 |
| Testimonial | 15 |
| Product Comparison | 17 |
| Hardware Requirement | 18 |
| About MAI | |

Our Vision

Since 2016, MAI has been on a mission to create a metaverse of medical education. We pioneered social learning for human body in a virtual world, and today, we help individuals and organizations connect and revolutionize how they teach, learn and share medical knowledge.



Quality

Inside BodyMap, the highly accurate, and high-resolution digital assets pave the way for an engaging social learning experience.

Usability

The user interface menus and tools are made intuitive for a seamless, user-friendly learning experience during or outside class.

Sociability

BodyMap motivates instructors and students to engage, interact, and collaborate within a VR social learning space.

Introduction

What is BodyMap?

BodyMap is an immersive, engaging VR solution for human anatomy. We offer medical students and professionals a high-quality, comprehensive 3D human model with 12 body systems, over 5,000 flashcards, and interactive tools for the best teaching and learning experience.

Why BodyMap?

Human anatomy plays a critical role in understanding any branch of medicine. This is why we created BodyMap to better educate individuals their health, better help educators teach their classes, and better prepare students to become next-generation doctors.

“

BodyMap is better than anything else on the market for students. It is an important tool for students as a big part of our curriculum is not only knowing the anatomical features, but seeing how they relate to one another.

”

— Katie Jones
Medical Student, University of Toledo



Our Advantages

- Comprehensive Anatomy**
 12 body systems based on strict MRI and CT data reconstruction
- High-Fidelity Model**
 We adopt modern techniques to cast clear, and precise anatomical landmarks
- Intuitive UI**
 Easily access your desired content in an all-in-one menu
- Easy Manipulations**
 Intuitive, and quick interactions with the 3D human model
- Interactive Flashcards**
 5,000+ flashcards, each with text, image, or animation
- Powerful Tools**
 VR space for anyone to interact with one another in real-time, anywhere
- VR Sessions**
 VR space for you to socially interact with others in real-time, anywhere
- Learning Platform**
 MAI Portal, a place to track your learning performance and progress

Features

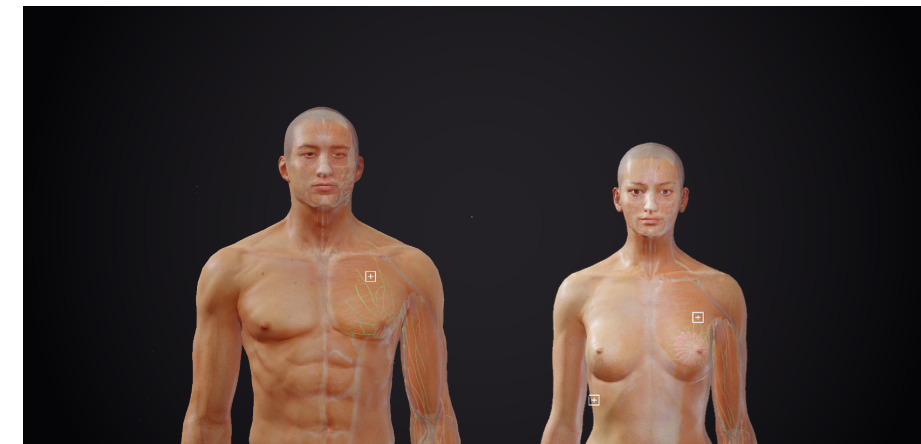
Comprehensive Anatomy

12 body systems based on strict MRI and CT data reconstruction



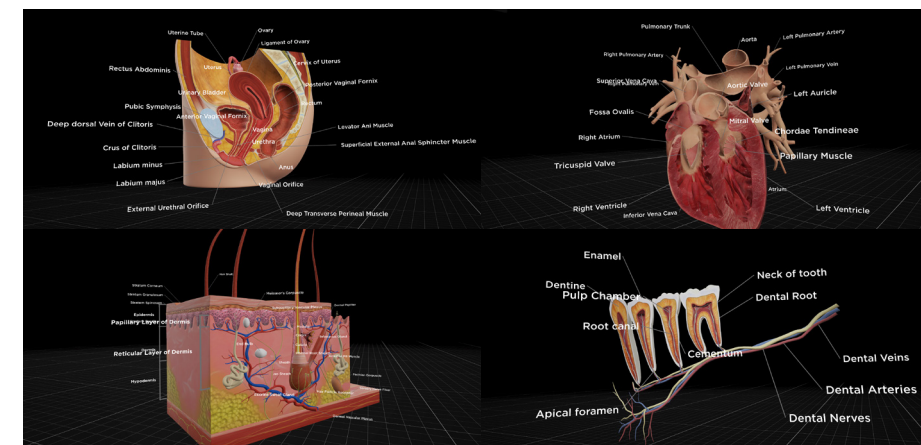
12 body systems

Explore over 5,000 structures from 12 body systems and 9 body regions and how they are related to each other.



Male or female model

Switch between the complete male and female 3D models displayed at 1:1 ratio to examine their anatomical differences.



Wide and close-up views

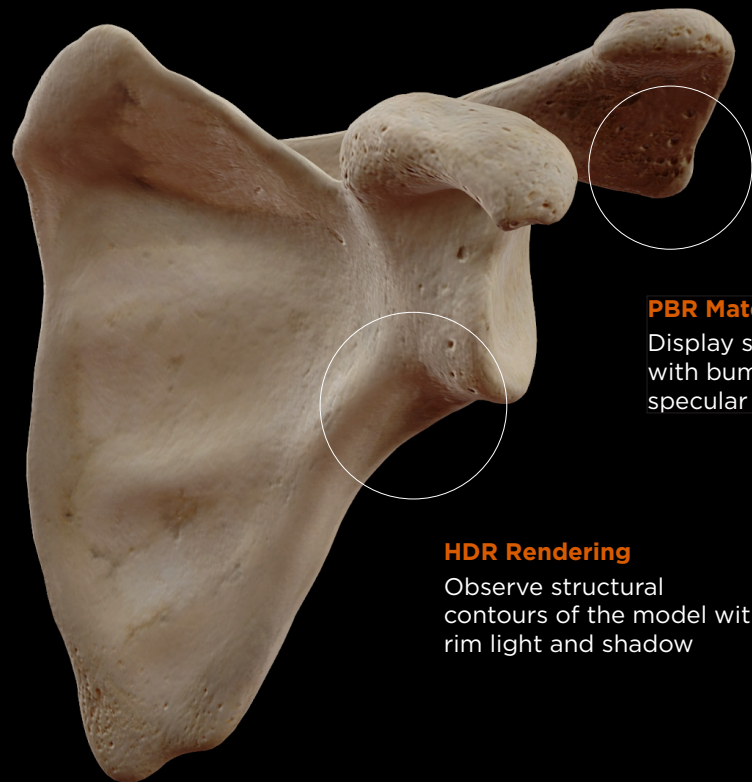
Observe the 3D models at macroscopic, microscopic and cross-sectional views in great details from any angle.

High-Fidelity Model

We adopt modern techniques to cast clear, and precise anatomical landmarks

LOD Model

View more details when you move closer to the model, while maintaining a high frame rate



PBR Material

Display surface textures with bumps, roughness, or specular of structures

HDR Rendering

Observe structural contours of the model with rim light and shadow



BodyMap Pro

LOD: 5 levels
PBR: Full
HDR: Yes



BodyMap Standalone

LOD: 3 levels
PBR: Partial
HDR: No



Other product

LOD: No
PBR: No
HDR: No

Intuitive UI

Easily access your desired content in an all-in-one menu

Tabs

Include 4 menu tabs of Body Systems, Library, Animations and Bookmarks

Body Systems

12 body systems including digestive, skeletal, nervous and circulatory systems

Library

A list of default courses based on our selected body structures and images

Animations

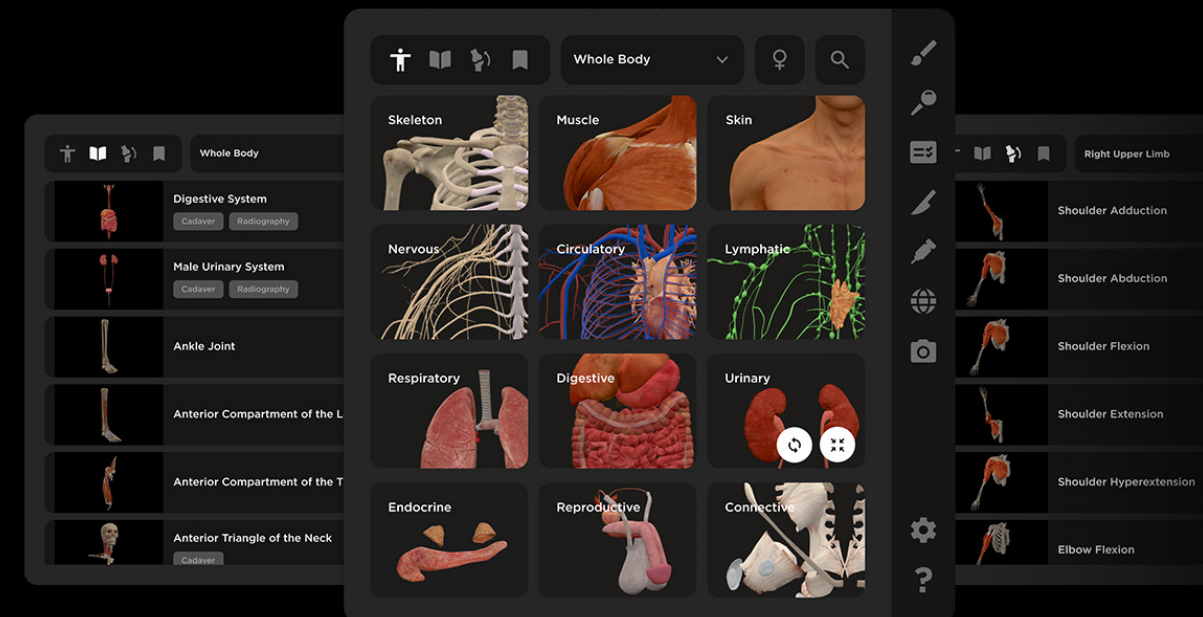
A list of joints that show how they move and the muscles involved in the movement

Bookmarks

A list of customized courses for your modified virtual model

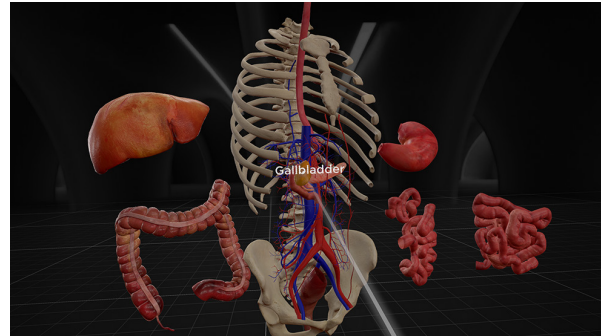
Tools

Include brushes, slicing, and web browser for better teaching and learning

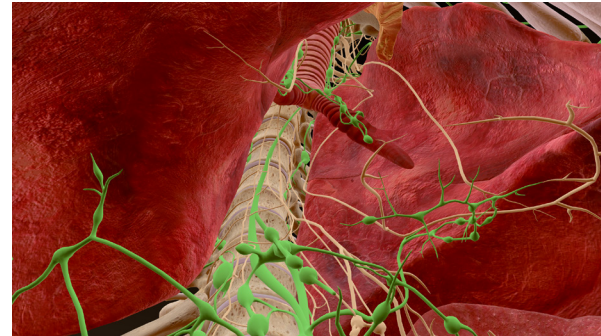


Easy Manipulations

Intuitive, and quick interactions with the 3D human model



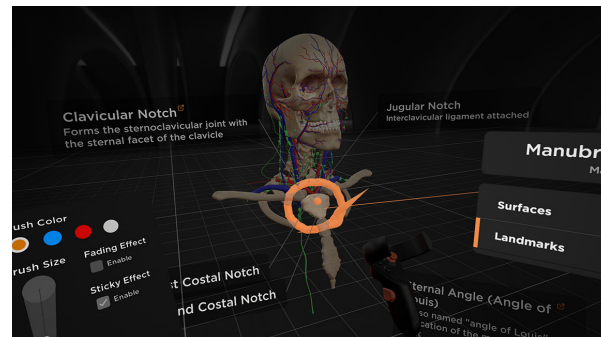
Move
Drag the 3D model further away, close to you or to any position.



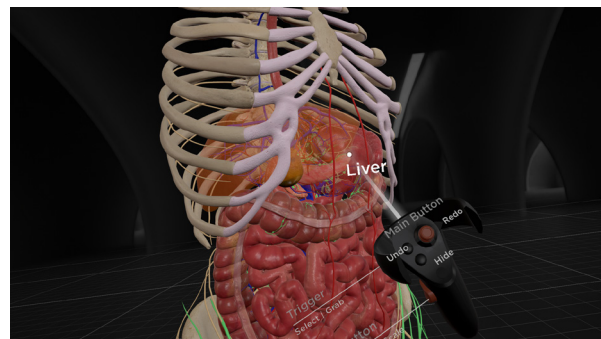
Scale
Zoom in, or out the model to observe each structure in detail or at large.



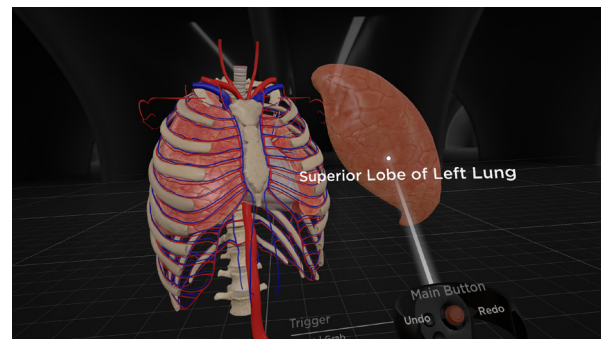
Grab
Take out any structure to observe it one at a time, and closely.



Annotate
Spin the model 360-degree to view it from any angle.



Hide
Hide any structure to better focus on the visible ones.

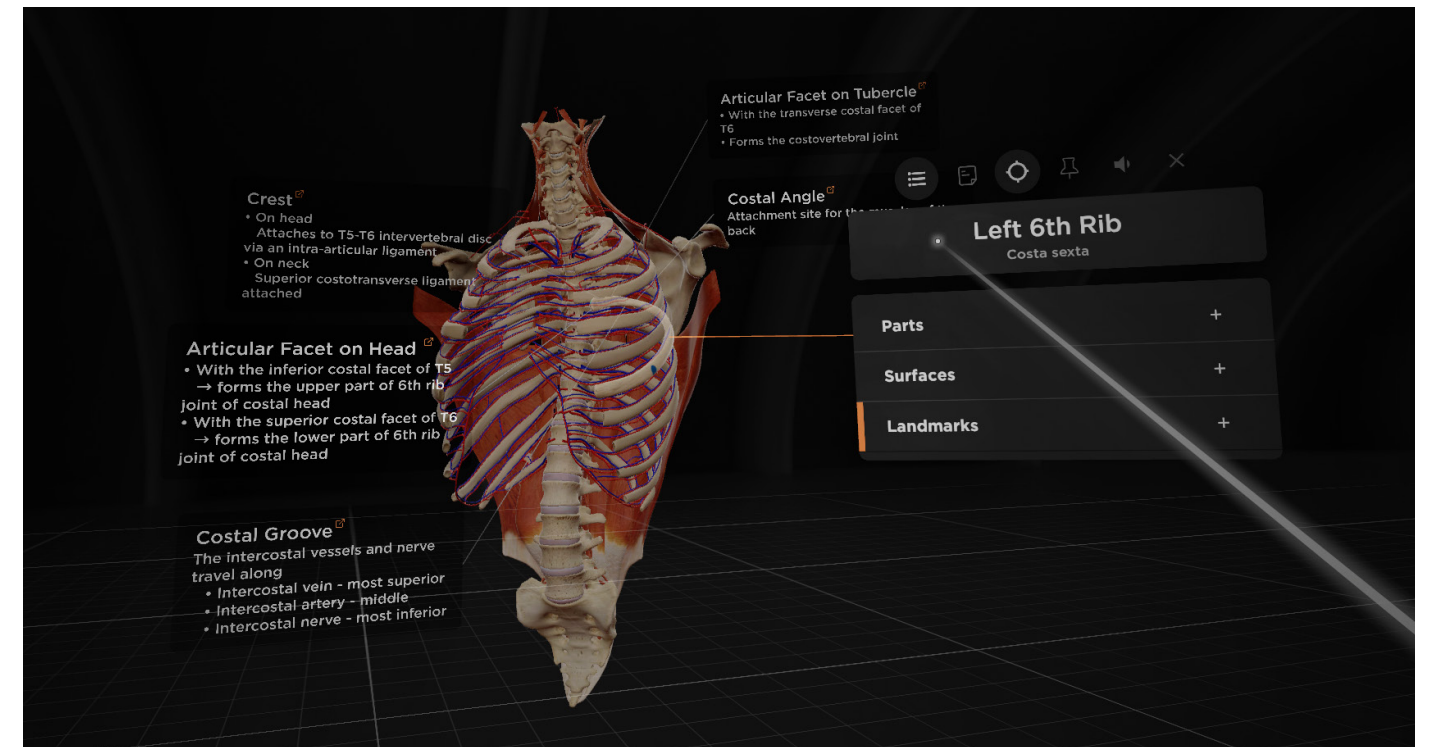


Undo
Undone or redone your previous action in the order you did or undid them.

Interactive Flashcard

5,000+ flashcards, each with text, image, or animation

Description Flashcards



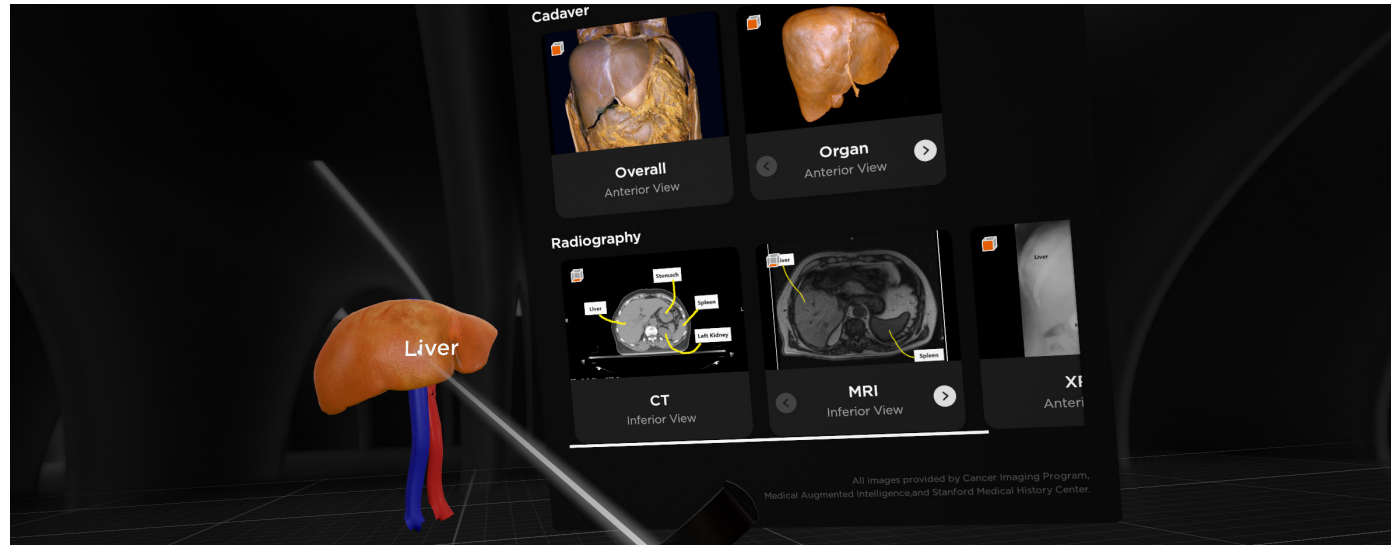
Info
See the structural name and labels of any selected structure

Isolate
Focus on one specific structure at a time by hiding the rest

Pathway
Watch how liquids or electricity of the structure flow through the body

Audio
Hear the correct pronunciation of each structure

Image Flashcards



Cadaver Images

Include overall & organ images of heart, lungs and liver

Pin Images

Drag each image out to closely observe its details

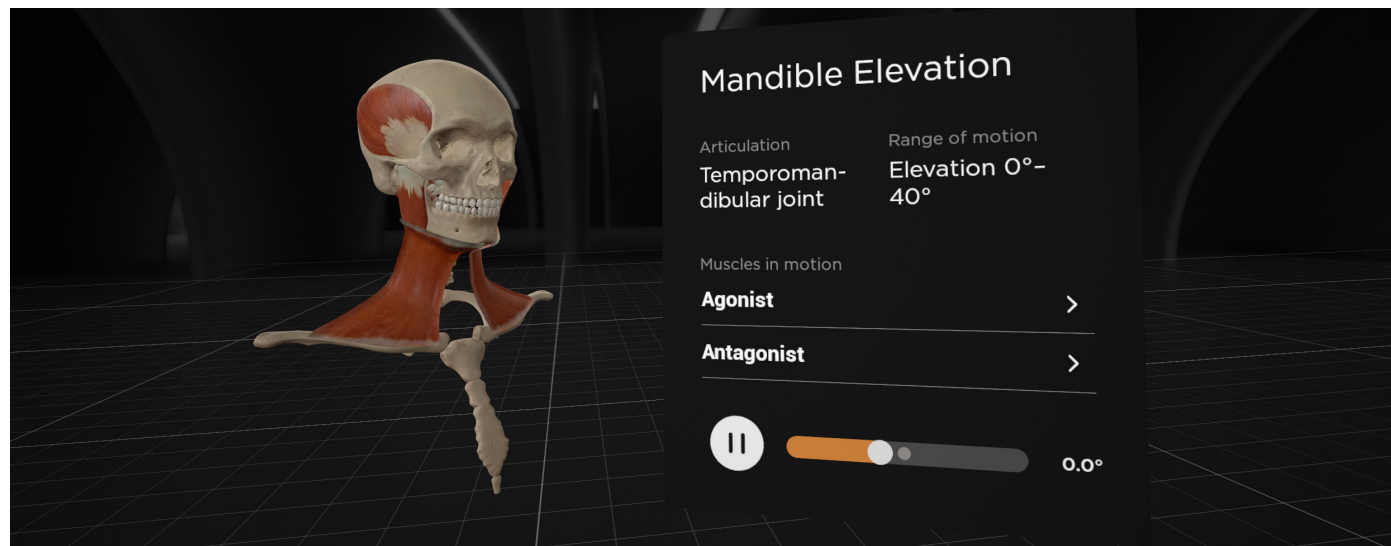
Radiographic Images

Include CT, MRI and X-ray images of heart, lungs and liver

Reliable Sources

Licensed by Stanford Medicine Lane Medical Library and National Cancer Institute

Animation Flashcards



Articulation

Show the joint, or the location where two or more bones meet

Muscles in Motion

Indicate which muscles are contracting and relaxing during motion

Range of Motion

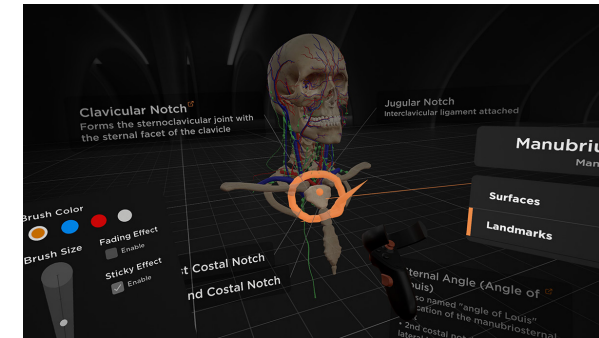
Indicate how much a particular joint can move or stretch

Motion Play Bar

Watch to what extent a particular joint has moved or stretched

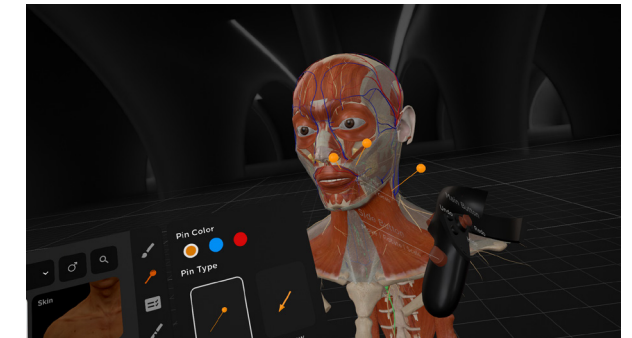
Powerful Tools

3D annotating, slicing and web browsing tools useful for teaching and learning



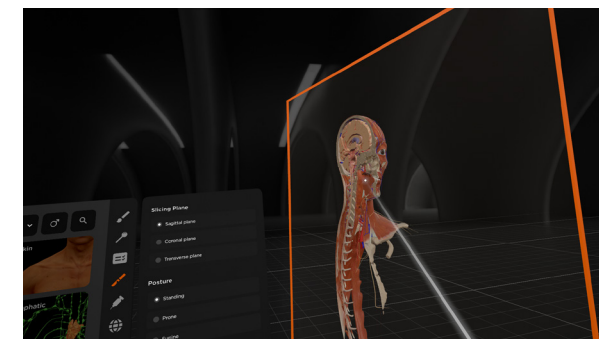
Brush

Draw meaningful explanations layered on top of the virtual model



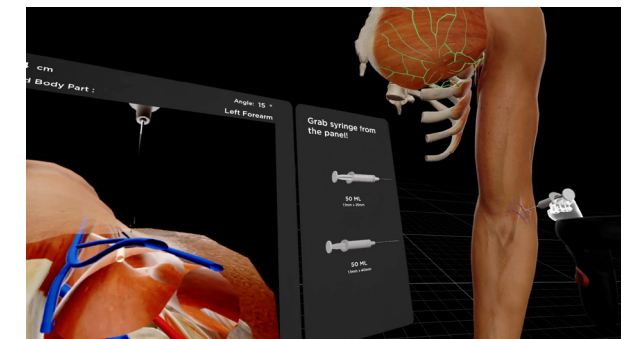
Pin

Insert obvious indicators to specific body parts as you explain them



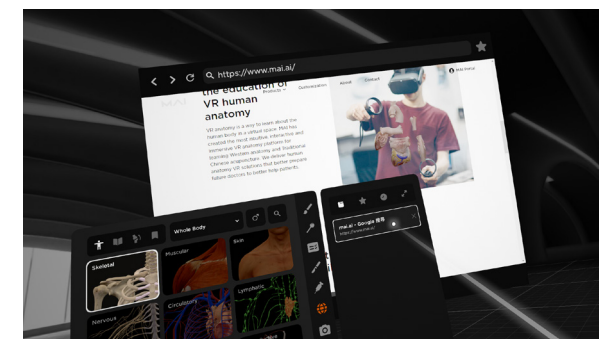
Slicing

Divide the model with 3 different slicing planes to observe its cross-sections



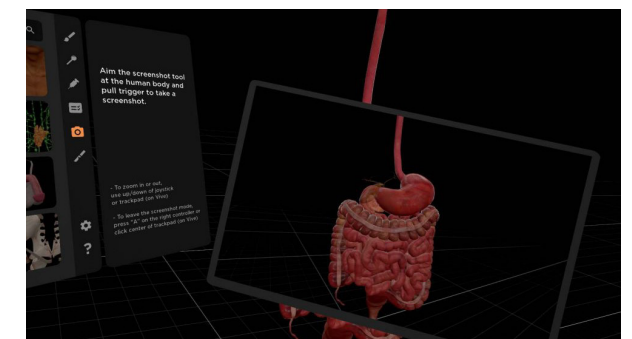
Insertion

Put a syringe into the virtual body, and feel the haptic feedback during simulation



Web Browser *only in BodyMap Pro

Browse the web, open a PDF file, or play a video while exploring the 3D model

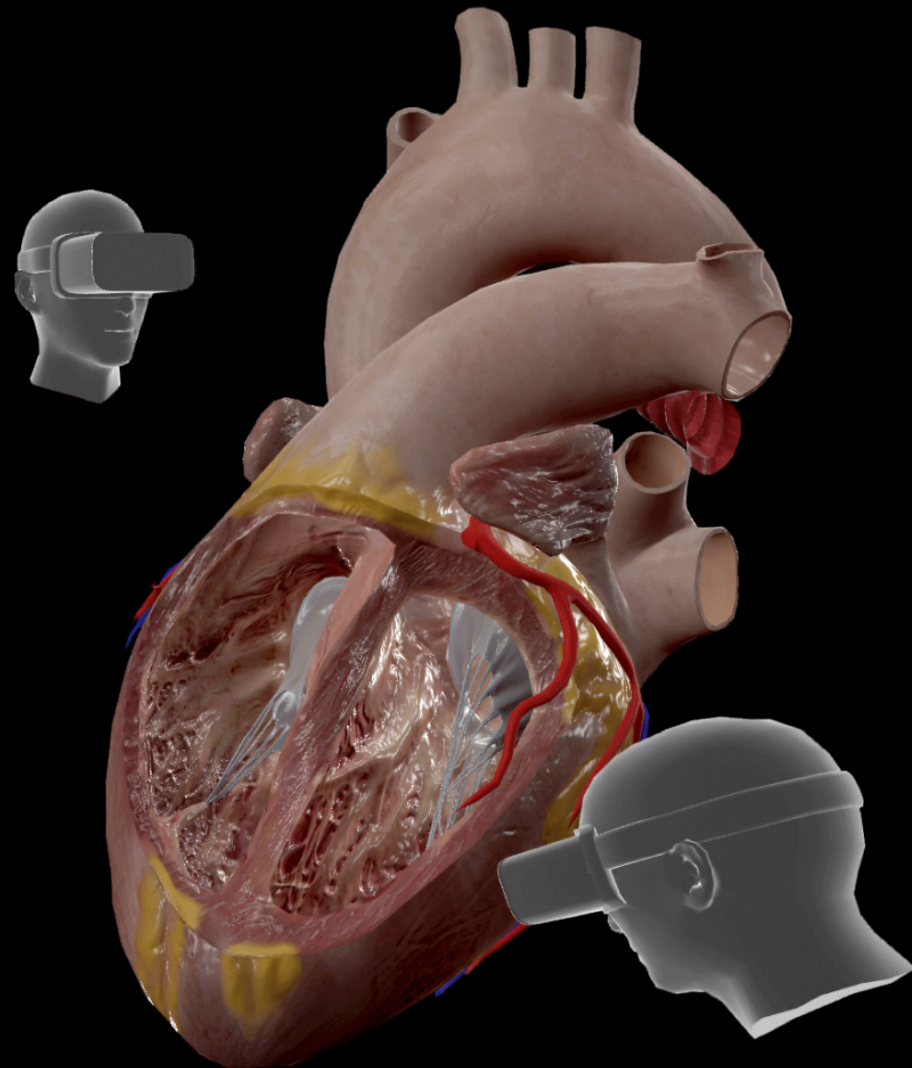


Screenshot *only in BodyMap Pro

Capture high-resolution images of the model, and export them locally to your device

VR Sessions

VR space for you to socially interact with others in real-time, anywhere



Invite Participants

Invite up to 100 participants to join a VR session for online discussion or collaboration

Host Controls

Give participants the permission to speak, or manipulate the model on their own

Activity Dashboard

Check the status of participants, including whether they are speaking or muted, in real-time

Cross-Device, Cross-Region Communication

Meet, and interact with participants using different devices and from all over the world

Learning Platform

MAI Portal, a place to track your learning performance and progress

Dashboard

View the overall activities and performance of everyone at a glance

Quiz and Exam

Create quizzes and group exams out of a question bank

Review and Evaluation

Check test scores, and questions with more answer time and low success rate

Customize Flashcards

Design your next curriculum by adding your own flashcard notes

User Management

Add or remove users from your organization, check their attendance and scores, and more

ACHIEVEMENT 525 out of 751
SUCCESS RATE 56 correct answers out of 80 question

| System | ACHIEVEMENT | SUCCESS RATE |
|--------------|-------------|--------------|
| Nervous | 70 % | 70 % |
| Circulatory | 20 % | 80 % |
| Muscle | 1.5 % | 15 % |
| Reproductive | 1.2 % | 10 % |
| Skeleton | 0 % | 0 % |
| Respiratory | 0 % | 0 % |
| Digestive | 0 % | 0 % |
| Connective | 0 % | 0 % |
| Urinary | 0 % | 0 % |
| Endocrine | 0 % | 0 % |
| Lymphatic | 0 % | 0 % |
| Skin | 0 % | 0 % |

| CREATED DATE | PARTICIPANTS | AVG SCORE |
|--------------|--------------|-----------|
| 2020/10/25 | 10 | 45 |
| 2020/10/24 | 12 | 60 |
| 2020/10/17 | 22 | 90 |
| 2020/10/17 | 21 | 100 |
| 2020/10/17 | 21 | 100 |

User Scenario



Classroom Lecture

Bring human body to life with BodyMap in a classroom. Instructors can explore, and identify different body systems on a big screen to immerse students, so they get the most out of the lessons.

- # of VR headsets needed** 1 for instructor
- Other items needed** VR-ready PC or laptop
Big TV screen
Good Wi-Fi



Academic Event

Use BodyMap as a supplementary tool in seminars, conferences, or workshops. Speakers can connect it to a projector or TV screen to visually, and easily explain and elaborate on topics.

- # of VR headsets needed** 1 for speaker
- Other items needed** VR-ready PC or laptop
Big TV screen
Good Wi-Fi



Self Study

BodyMap is the VR human anatomy app for reviewing what your teacher has taught, and previewing what you will learn. You can study on your own, and at your own pace.

- # of VR headsets needed** 1 per student
- Other items needed** Good Wi-Fi



Remote Learning

BodyMap is the distance-learning solution for human anatomy. You can attend a VR class hosted by your teacher, meet with your classmates in a VR session, or join a VR workshop anytime, anywhere.

- # of VR headsets needed** 1 for instructor/speaker + 1 per student/participant
- Other items needed** VR-ready PC or laptop
Good Wi-Fi

Product Comparison

We have two versions of BodyMap. BodyMap is the standalone version for standalone VR headsets like Meta Quest 2, and BodyMap Pro is the PC/laptop-based version.

| Category | Sub-Category | BodyMap | BodyMap Pro | |
|--------------------------|----------------------|---|--|---|
| | | Student License | Instructor License | |
| | | | Instructor/ Student License | |
| 3D Model | Sex | Male | Male | |
| | | | Male + Female | |
| | Body Systems | 12 systems | 12 systems | |
| | Body Regions | 9 regions | 9 regions | |
| | | | 9 regions + whole body | |
| Resolution | | Standard | Standard | |
| | | | High | |
| Content | | Descriptions, Images & Animations | | |
| Function | Pathway | v | v | |
| | | | v | |
| | Isolate ¹ | 1 stage ² | 1 stage ² | |
| | | | 2 stages ² | |
| | Audio | v | v | |
| | | | v | |
| Manipulations | | Move, Grab, Rotate, Scale, Undo, Hide ¹ | Move, Grab, Rotate, Scale, Undo, Hide ¹ | |
| | | | Move, Grab, Rotate, Scale, Undo, Hide ² | |
| Annotation | | Brush & Pin | | |
| Tools | Quiz | v | v | |
| | | | v | |
| | Slicing | v | v | |
| | | | | v |
| | Insertion | | | v |
| | Web Browser | | | |
| | | | v | |
| | Screenshot | | | |
| | | | v | |
| Languages | | English, Chinese (Traditional & Simplified), French, German, Portuguese, Spanish, Thai & Vietnamese | | |
| VR Classroom | | v | v | |
| | | | v | |
| Learning Platform | | | v | |
| | | | v | |

1. The Isolate feature allows you to focus on one specific structure by hiding the rest, while the Hide feature allows you to hide a body structure one by one.

2. In BodyMap Pro, the Isolate and Hide functions will first make all structures except the one you selected translucent (stage 1), and then transparent (stage 2).

Product Comparison

BodyMap is the only VR anatomy application certified for continuing medical education (CME) credits in the US.

Here is a comparison table of what makes BodyMap different:

| | | BodyMap | Other(s) |
|--------------------|-----------------------|---|---|
| Quality | Level of Detail | High fidelity | Low fidelity |
| | Level of Detail | Frame rate: 90fps (Pro), 50-90fps (Standalone) Anti-aliasing: Yes | Frame rate: 40fps Anti-aliasing: N/A |
| | Comprehensiveness | 5,000+ structures with full extremities, fasciae and tissues | Less extremities, fasciae and tissues |
| Usability | Intuitive UX | Clean UI with intuitive controls 5 DoF maneuver in human body | Complex UI with lots of buttons & menus to master 3 DoF maneuver in human body |
| | Interactive Flashcard | Interactive With description, image or animation in anatomy labels Clickable features such as pathway, isolate, hyperlinks and more | Static Without description in anatomy labels |
| | Curated Learning | Carefully-designed, and organized flashcard contents | Loosely compiled, and less organized flashcard contents |
| Sociability | Engaging VR Space | Up to 100 users | 10 users |
| | Learning Platform | Quiz results, difficulty level, group exams, activity dashboard | Quiz results |
| | CME Accredited | Yes | N/A |

Hardware Requirement

MAI has partnered with industry leaders such as Meta, HTC, NVIDIA, and AMD to provide the best experience of the best solutions on the best headsets.

| | | BodyMap | BodyMap Pro |
|-------------------|--------------------|-------------------------------|---|
| VR Headset | | Meta: Quest 2 HTC: Focus 3 | Meta: Quest 2, Rift S HTC: VIVE Pro, VIVE Cosmos |
| | PC / Laptop | | |
| | OS | N/A | Windows 10 |
| | CPU | N/A | Intel Core i7, AMD Ryzen 7 2700x, Ryzen 5 2600x equivalent or better |
| | GPU | N/A | NVIDIA GeForce GTX 1060, AMD Radeon RX 580 equivalent or better |
| | RAM | N/A | 16GB DDR4 or more |
| | Disk Space | N/A | 3GB |

About MAI

Augmented Intelligence, Inc., doing business as Medical Augmented Intelligence (MAI), is a 2016-founded startup focusing on innovative medical VR solutions. We develop VR applications that combine textbook knowledge with hands-on simulation, and that utilize the latest technologies for an immersive, virtual learning experience.

Our solutions include BodyMap and AcuMap, the world's leading VR training solutions for learning human anatomy and acupuncture, respectively, and also DigiTwin, a medical 3D virtual imaging tool.

We make it our mission to provide institutions, schools, groups and individuals with the most effective, and enjoyable way to teach and learn about human body, and collaborate in real-time, from anywhere.

We have offices located in the US and Taiwan. You are more than welcome to visit us in person, or drop us an email.



US
4000 Legato Rd., Ste. 1100
Fairfax, VA 22033, USA

Taiwan
15F, No. 101, Songren Rd.,
Xinyi District, Taipei, 110 Taiwan

Augmented Intelligence, Inc.
www.mai.ai
Email: hello@mai.ai